

## MNT RCORE RK3588 Processor Module

Dear MNT Customer,

thank you for purchasing the MNT RCORE with RK3588. This processor module for your MNT Pocket Reform offers significant CPU, GPU and I/O performance increases as well as up to 32GB of RAM. We hope you'll enjoy the enhanced productivity and fun it brings.

### Installation

During installation, refer to the pictures on the back of this page for guidance.

1. Turn off Pocket Reform's standby power switch. Remove the back cover of the top half of Pocket Reform. Remove your previous CPU module, including the MIPI DSI flat cable. To remove the flat cable, first loosen (pull) the black part of the connector a bit.
2. Push the RCORE module into the CPU slot of your Pocket Reform motherboard at a 45 degree angle and then press it down until it clicks into place.
3. Flip RCORE over and connect the included flat cable to the single connector on RCORE's back (blue part visible). Plug the other end of the cable (blue part visible) into the DSI connector on Pocket Reform's motherboard and secure it by pushing in the black part of the connector. Take your time and make sure the cable is straight and all the way in.
4. If your bundle includes an M.2 SSD and/or M.2 Wi-Fi card, install them in their respective slots. Replace the Molex antenna with the included one, and place the secondary antenna as shown on the picture.
5. Attach the included thermal pad on the RK3588 processor as pictured. Remove protective films from the thermal pad before attaching it. Carefully close up your Pocket Reform while making sure not to squeeze any cables.

### Specifications

- Includes Firefly iCore-3588Q (Rockchip RK3588, 16GB or 32GB RAM, 256GB eMMC)
- 4×2.4GHz Cortex-A76 + 4×1.8GHz Cortex-A55 CPUs
- ARM Mali G610 MP4 GPU (OpenGL/ES 3.1)
- Card edge connector: 200 pin SO-DIMM card edge (mates with TE 1717254-1 or TE 1473005-1)
- FPC Connectors for: 1x internal HDMI, 1x MIPI-DSI (on back side), 1x optional WiFi/BT expansion
- Dual PCIe controllers
- Dual display capable
- Gigabit Ethernet controller

### Contents

- RCORE with iCore-3588Q and DSI display cable
- Thermal pad

### Software and Sources

The RCORE module comes with the MNT Reform System Image (for MNT Pocket Reform) preinstalled on the 256GB eMMC flash, so you're ready to go.

Should you want to start again with a fresh System Image, you can download the **pocket-reform-system-rk3588** image from the following URL, unpack and image it to a MicroSD card, which RCORE can boot automatically:

<https://mnt.re/system-image>

Hardware sources, schematics and software instructions are published at:

<https://source.mnt.re/reform/mnt-reform-rk3588-som>

### Warranty

MNT Research covers the warranty to the extent required by law for the unmodified product and following the safety instructions. Warranty does not cover any modifications made to the product.

### Safety Instructions ▲

- Electronic parts can be damaged by static electricity. Ground yourself before touching.
- Before installation, consult the safety instructions of MNT Reform and remove all power sources from the system.



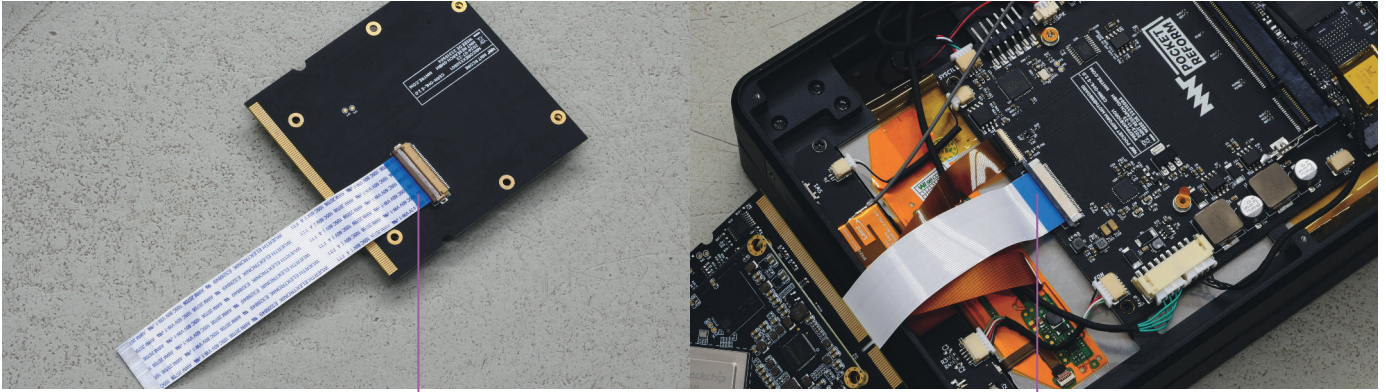
The product complies with the requirements of the European Directives and DIN standards:  
EMC Directive 2014/30/EU, Low Voltage Directive 2014/35/EU  
RoHS Directive 2011/65/EU, DIN EN 55022:2011-12  
DIN EN 55024:2016-05, DIN EN 61000-6-1:2007  
DIN EN 61000-6-3:2007/A1:2011/AC:2012  
DIN EN 61000-3-2:2014, DIN EN 61000-3-3:2013



Get updates and source code at: [mntre.com/reform](https://mntre.com/reform)

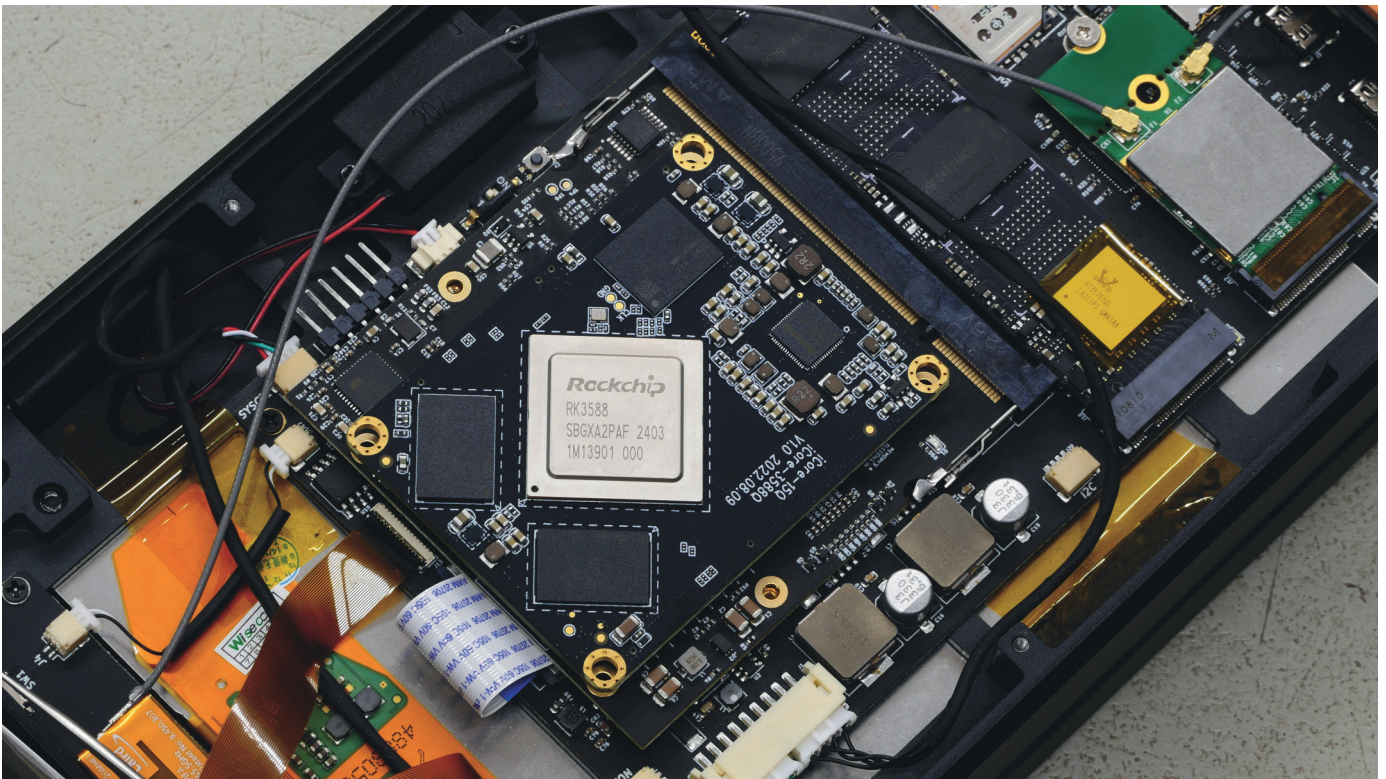
Need help? Join [community.mntre](https://community.mntre.com) or write to [support@mntre.com](mailto:support@mntre.com)

Join our IRC channel **#mnt-reform** on: [irc.libera.chat](https://irc.libera.chat)



Blue end on top

Blue end on top



Secondary antenna placement



Thermal pad

