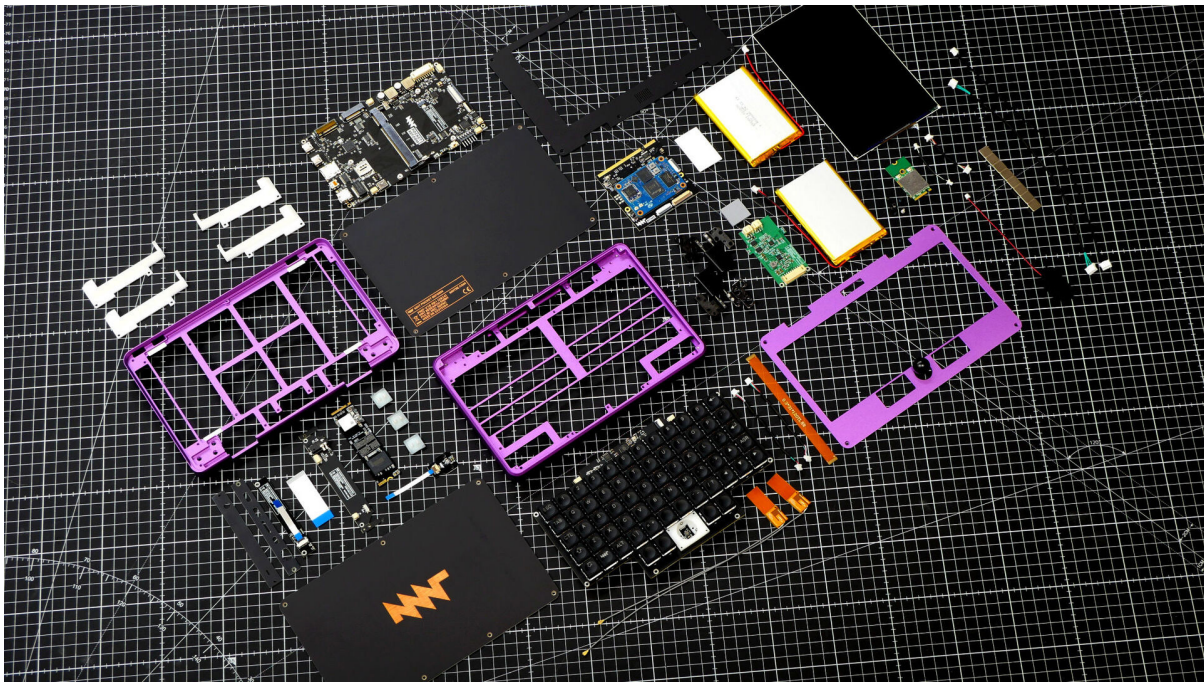


MNT Pocket Reform Assembly Manual

Dear MNT Customer,

Thank you for purchasing the MNT Pocket Reform DIY Kit, our fully open hardware 7" mini laptop. This manual will guide you through the whole assembly. The only extra tool you need is a Phillips screwdriver. Let's take a look at the parts first:



Package Contents

1 Bottom Half	10 Batteries	19 Hinges
2 Top Half	11 Display with Cable	20 Motherboard
3 Top Back Cover	12 Keyboard + Trackball	21 Thermal Pad
4 Bottom Back Cover	13 Keyboard Cables	22 Speaker
5 Keyboard Frame	14 OLED	23 Speaker Cables
6 Display Frame	15 Magnets	24 Speaker PCB
7 Charger Board	16 SSD	25 Port Covers
8 Charger Cables	17 Wi-Fi Card	26 Foam Stickers
9 Battery Holders	18 Antennas	

Types of Screws

M2 × 5 mm Countersunk Head Screws 

M2 × 3 mm Countersunk Head Screws 

M6 × 4 mm Countersunk Head Screws 

M2 × 4 mm Cheese Head Screws 

M2 × 2 mm M.2 Mounting Screws 

Case Parts

1 Bottom Half

2 Top Half



3 Top Back Cover

5 Keyboard Frame

4 Bottom Back Cover

6 Display Frame

Electronic Parts and Components

7 Charger Board

21 Thermal Pad

9 Battery Holders

13 Keyboard Cables

10 Batteries

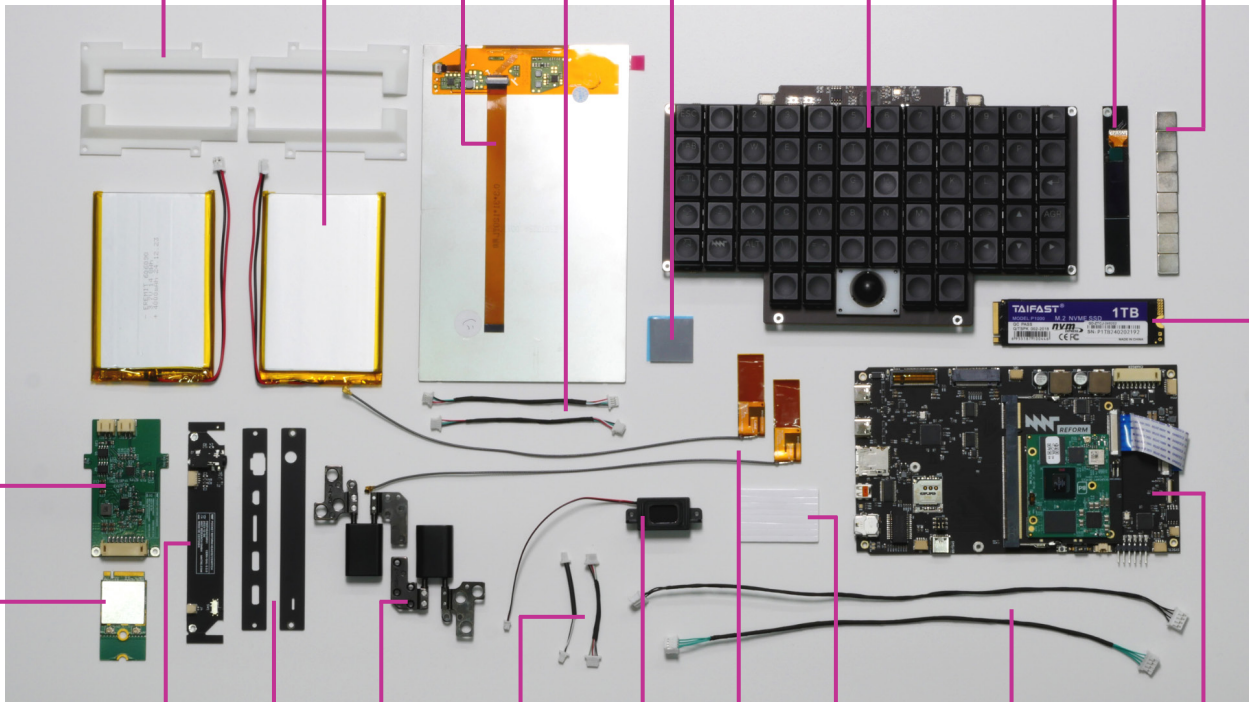
11 Display with Cable

12 Keyboard with Trackball

15 Magnets

14 OLED

16 SSD



17 Wi-Fi Card

25 Port Covers

22 Speaker

8 Charger Cables

19 Hinges

18 Antennas

20 Motherboard

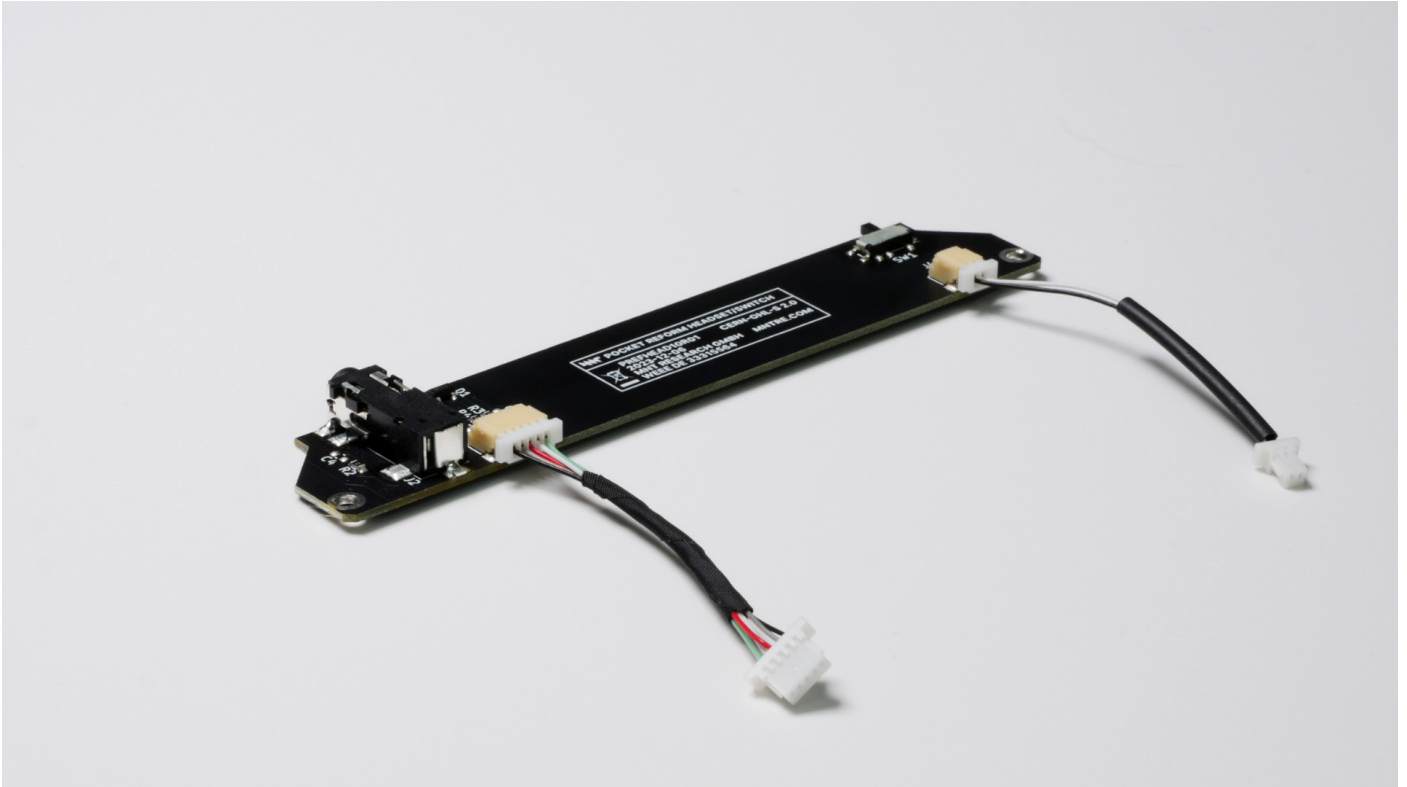
24 Headphone Board

23 Headphone Cable + Standby Switch Cable

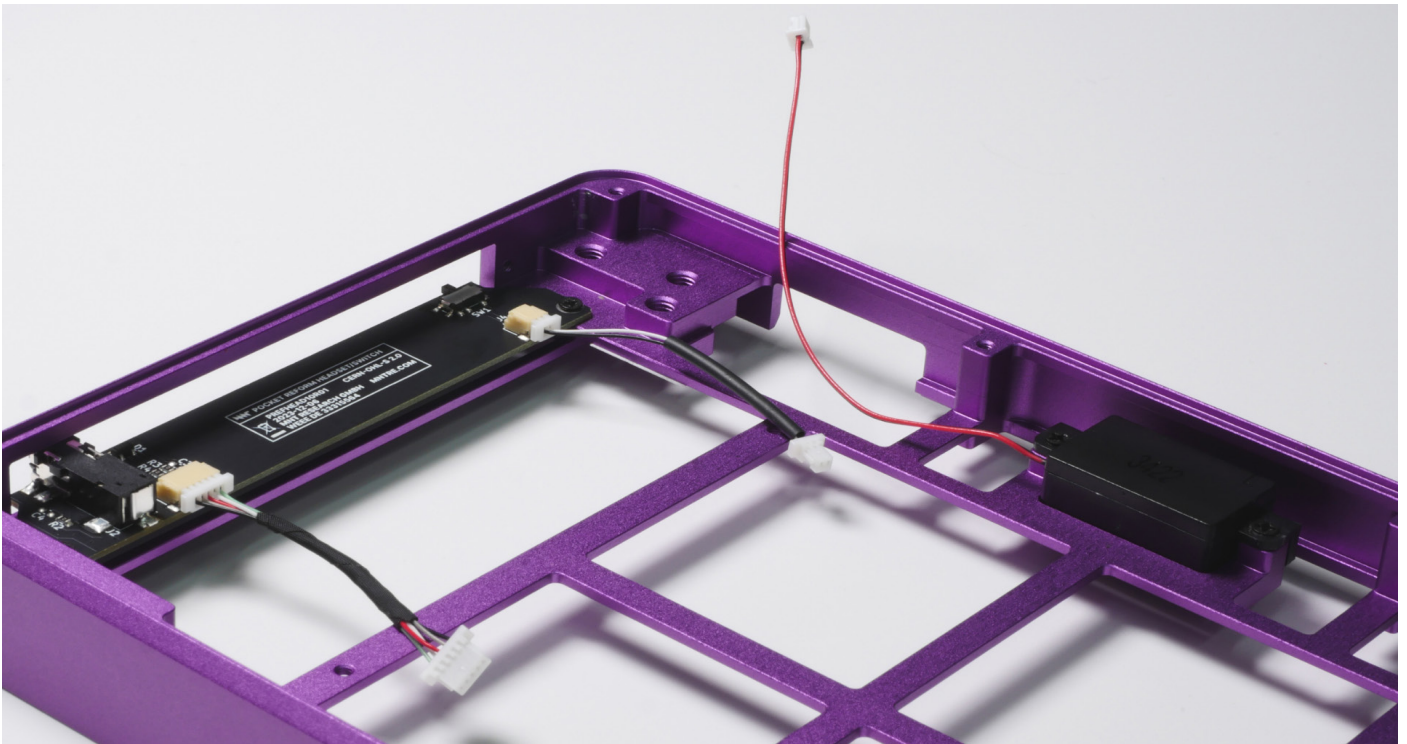
26 Stickers

Assembly

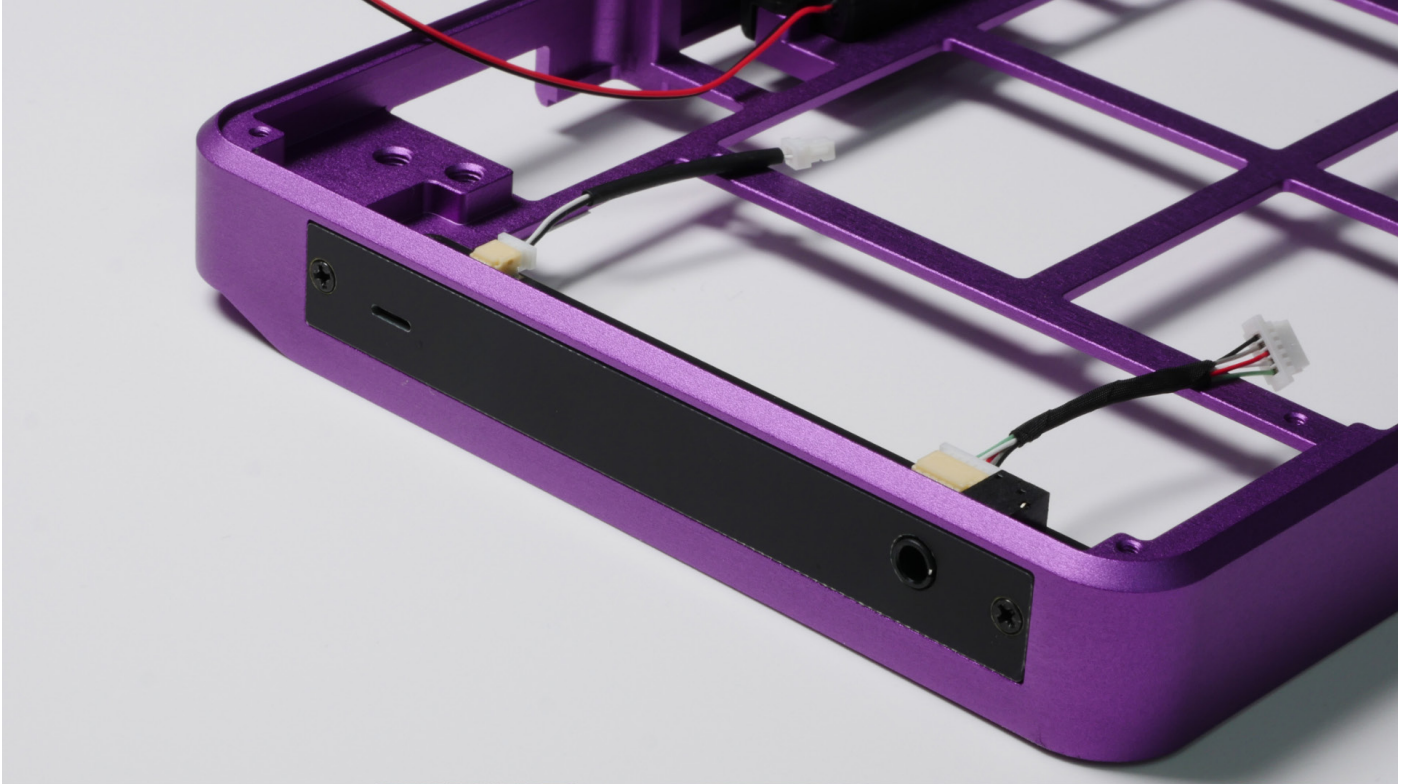
1. Remove the excess edges of the headphone board (24) and plug in the headphone cable and the standby switch cable (23).



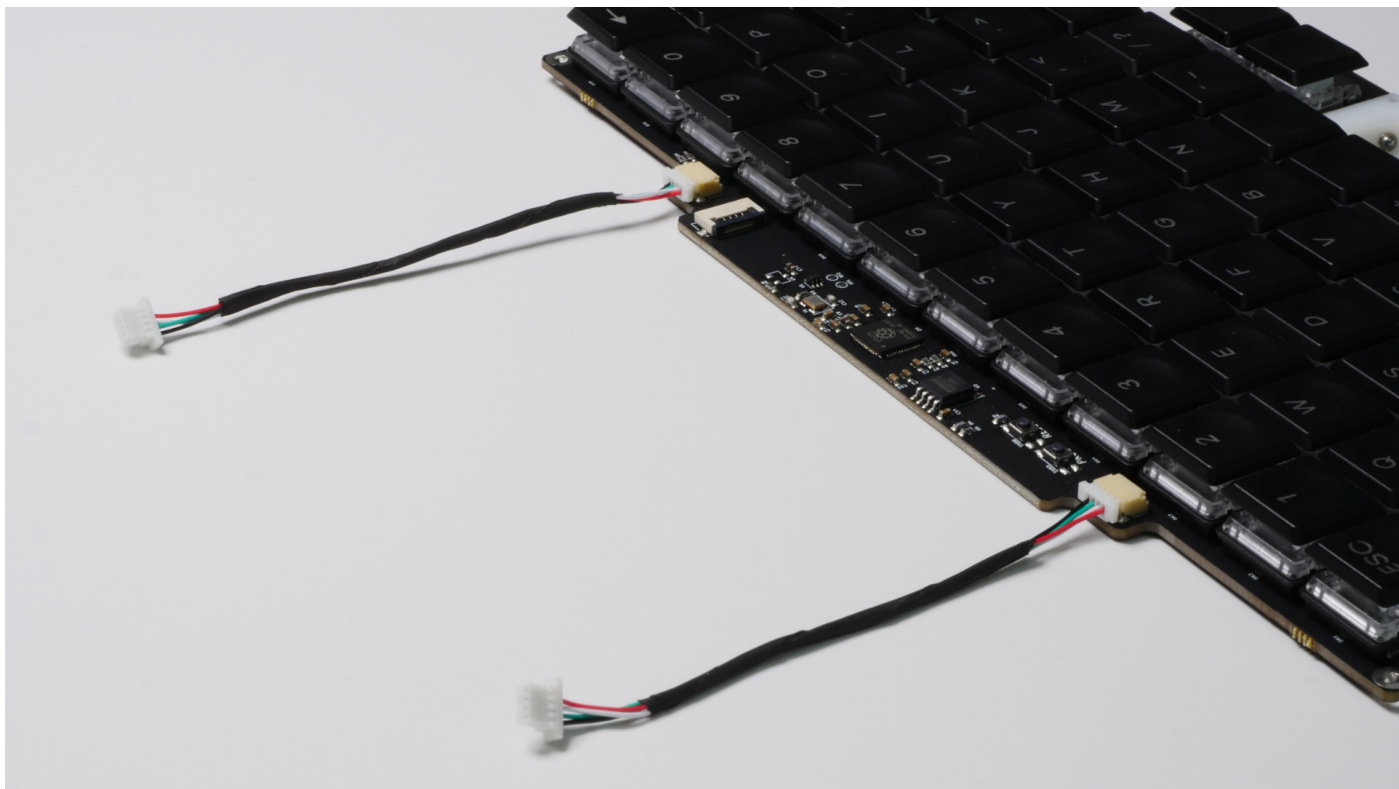
2. Mount the speaker (22) and the headphone board (24) to the top half (2) using M2×5 mm cheese head screws.



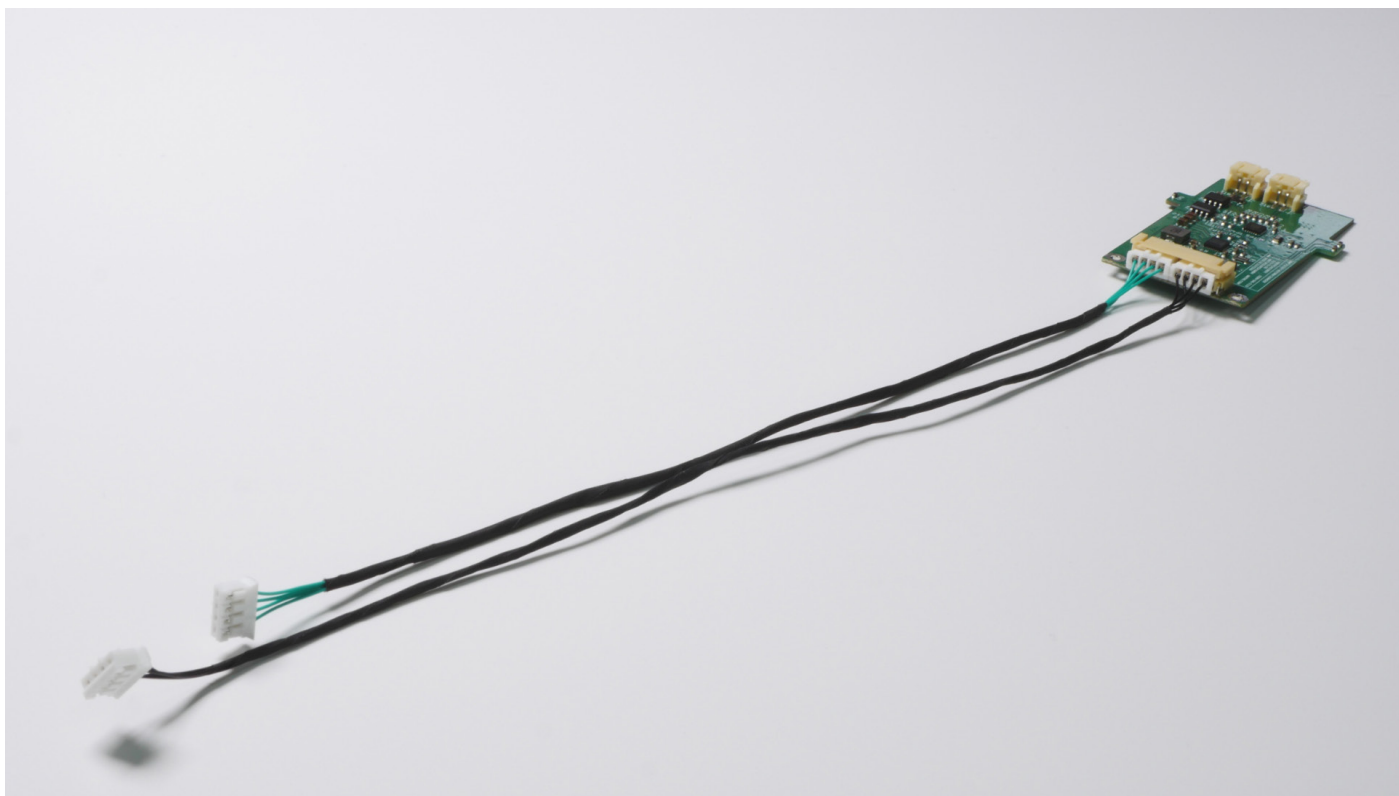
3. Mount the port covers (25) to their respective sides with M2×5 mm countersunk head screws.



4. Connect the two keyboard cables (**13**) to the left and right.



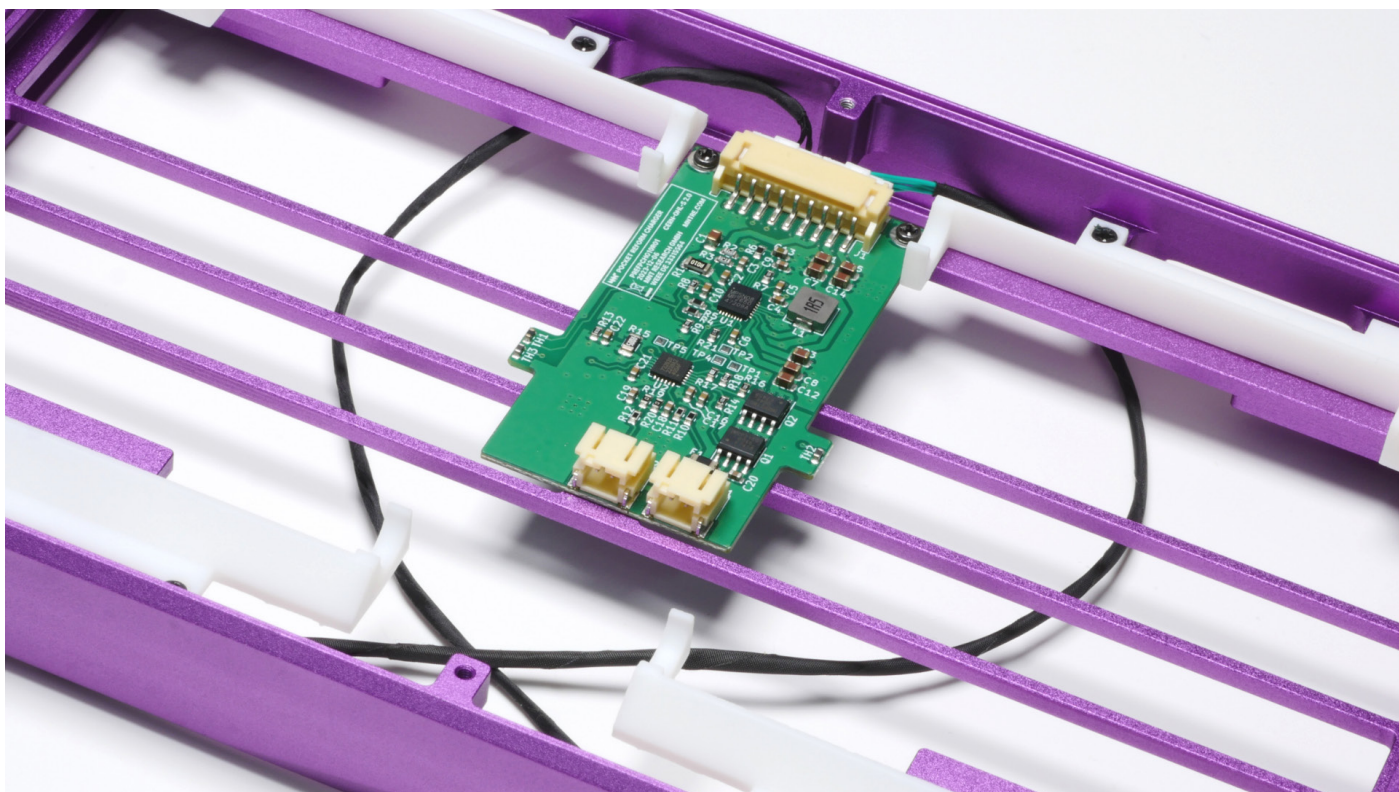
5. Connect the two charger cables (**8**) to the charger board (**7**). Make sure that the black cable is on the right as shown in the picture.



6. Mount all four battery holders (9) with M2×5 mm cheese head screws.



7. Mount the charger board (7) to the bottom half (1) using M2×4 mm cheese head screws. Put the cables (8) through the free spaces between PCB and holders.



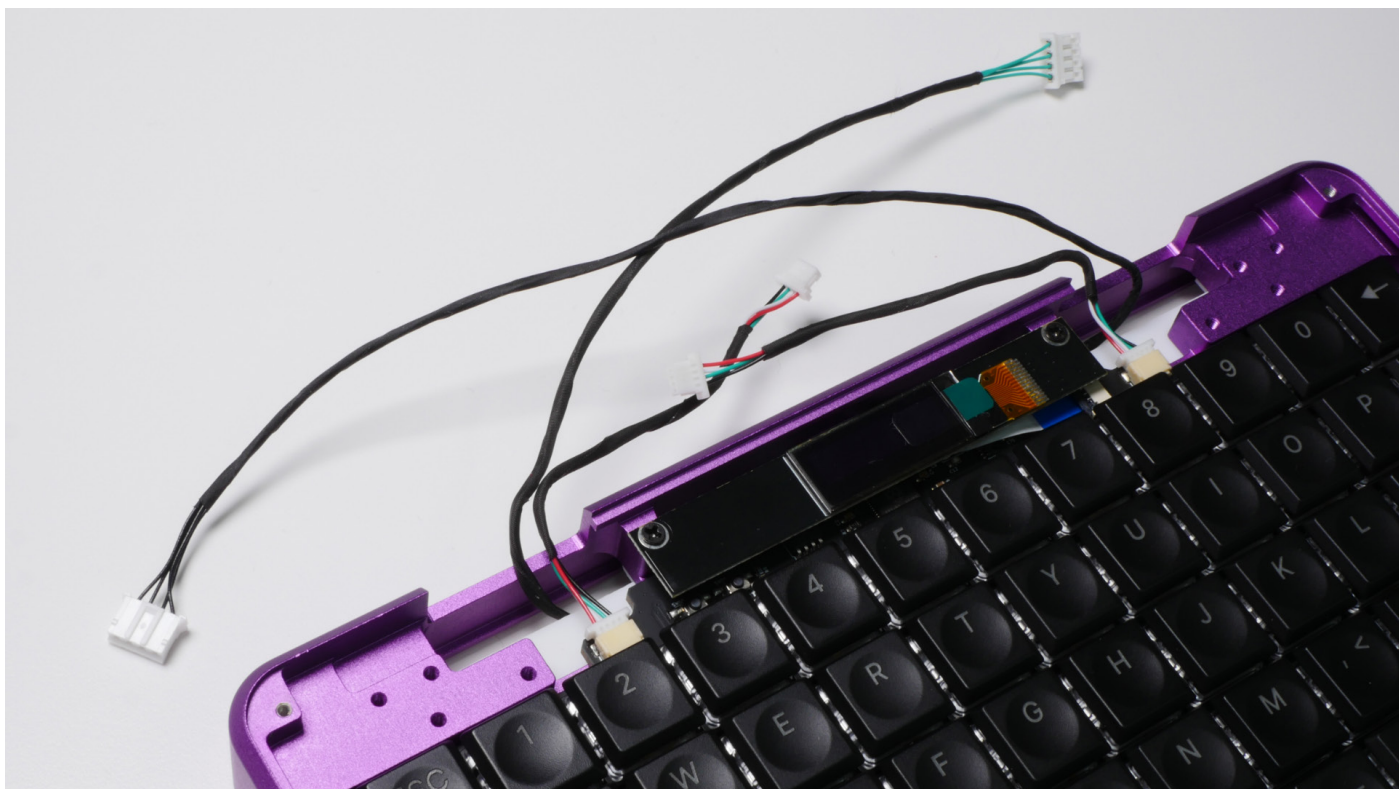
8. Connect the OLED screen (14) to the keyboard (12) and mount it to the bottom half (1) using M2×5 mm countersunk head screws. Remove the protective film.



9. Mount the keyboard (12) to the bottom half (1) using M2×5 mm countersunk head screws.



10. Shape the cables as pictured.



11. Mount the hinges (19) to the bottom half first, using M6×4 mm countersunk head screws and make sure that the cables are inside. This requires a bit of practice.



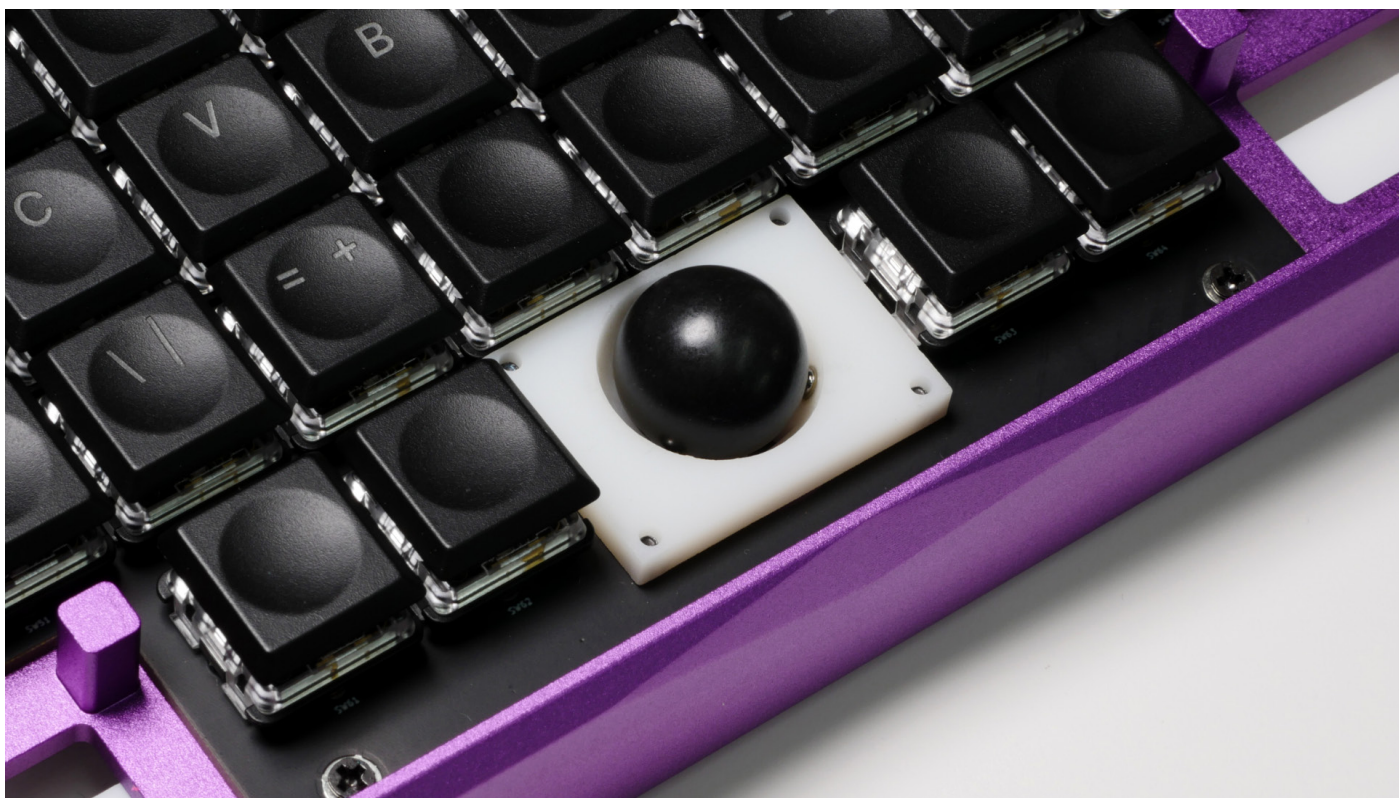
12. Now mount the hinges (19) to the top half (2) using M6×4 mm countersunk head screws. If the top and the bottom half are a bit off when you close the device, loosen the top hinge screws a bit and make small adjustments by pushing the respective hinge gently.



13. Insert the magnets (15) into the bottom half (1). We recommend to make sure that the polarities of all magnets face the same direction. Hold them down with two fingers if necessary.



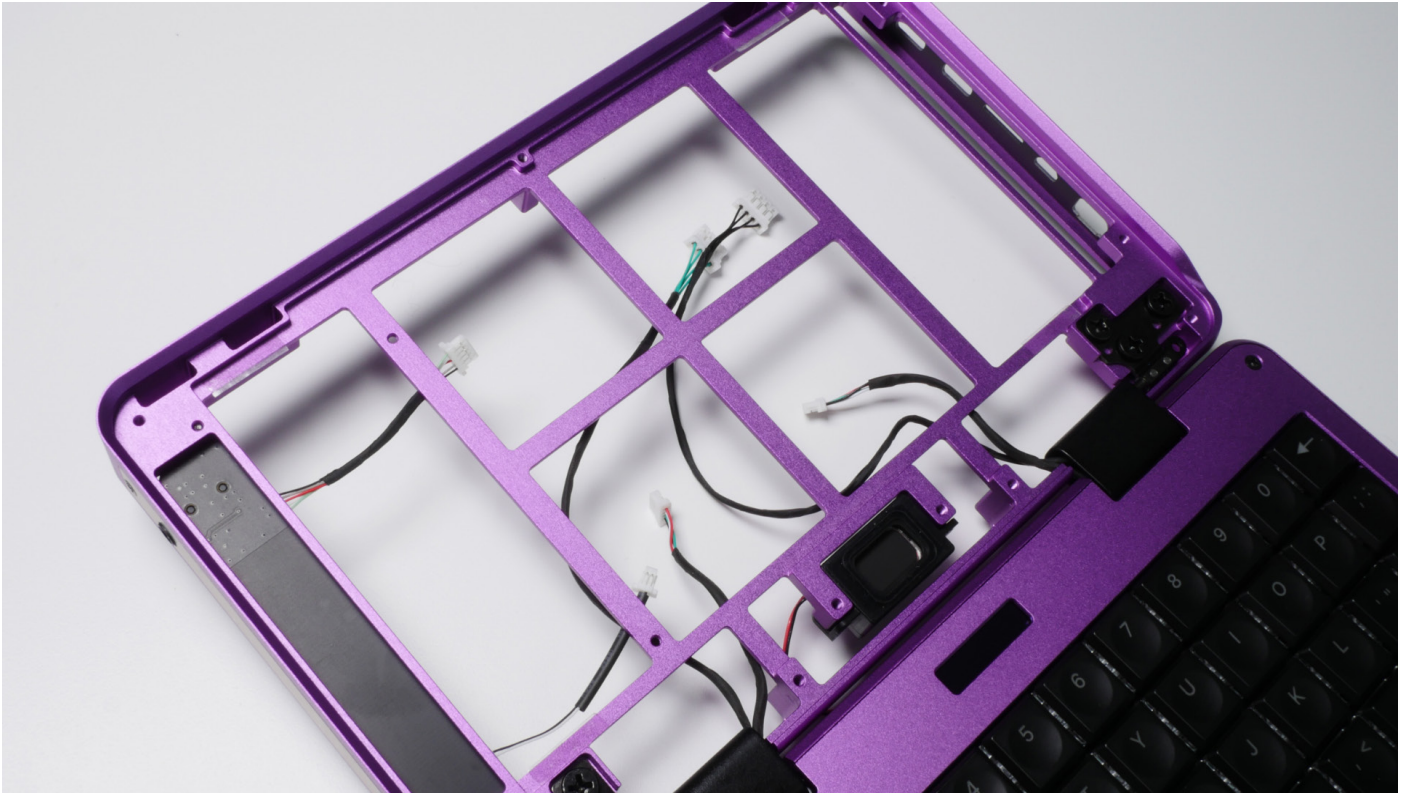
14. Put the trackball (12) into the trackball cup.



15. Mount the keyboard frame (5) to the bottom half using M2×5 mm countersunk head screws. Don't push the screws further if you notice resistance. Be mindful that the magnets will attract the screws and the screwdriver.



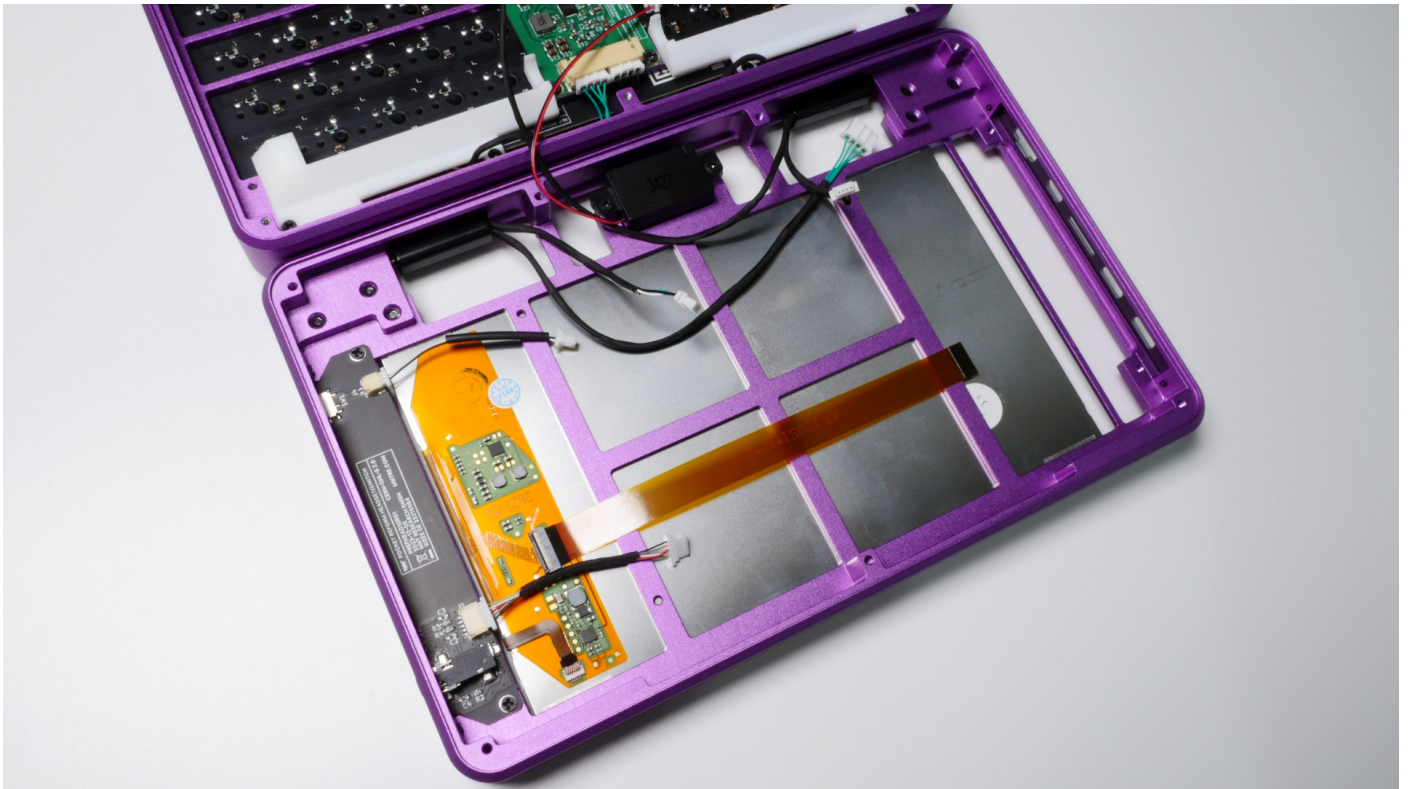
16. Remove the film from the four white strips of stickers on the top half (2). These are needed to hold the display (11) in place.



17. Put the display (11) on the four strips of stickers. It needs to be put a bit more to the right, and there must be some space left above the display. Make sure that the display cable on the back lies on top of the frame. (refer to next page, step 18.)



18. It should look like this from the back.



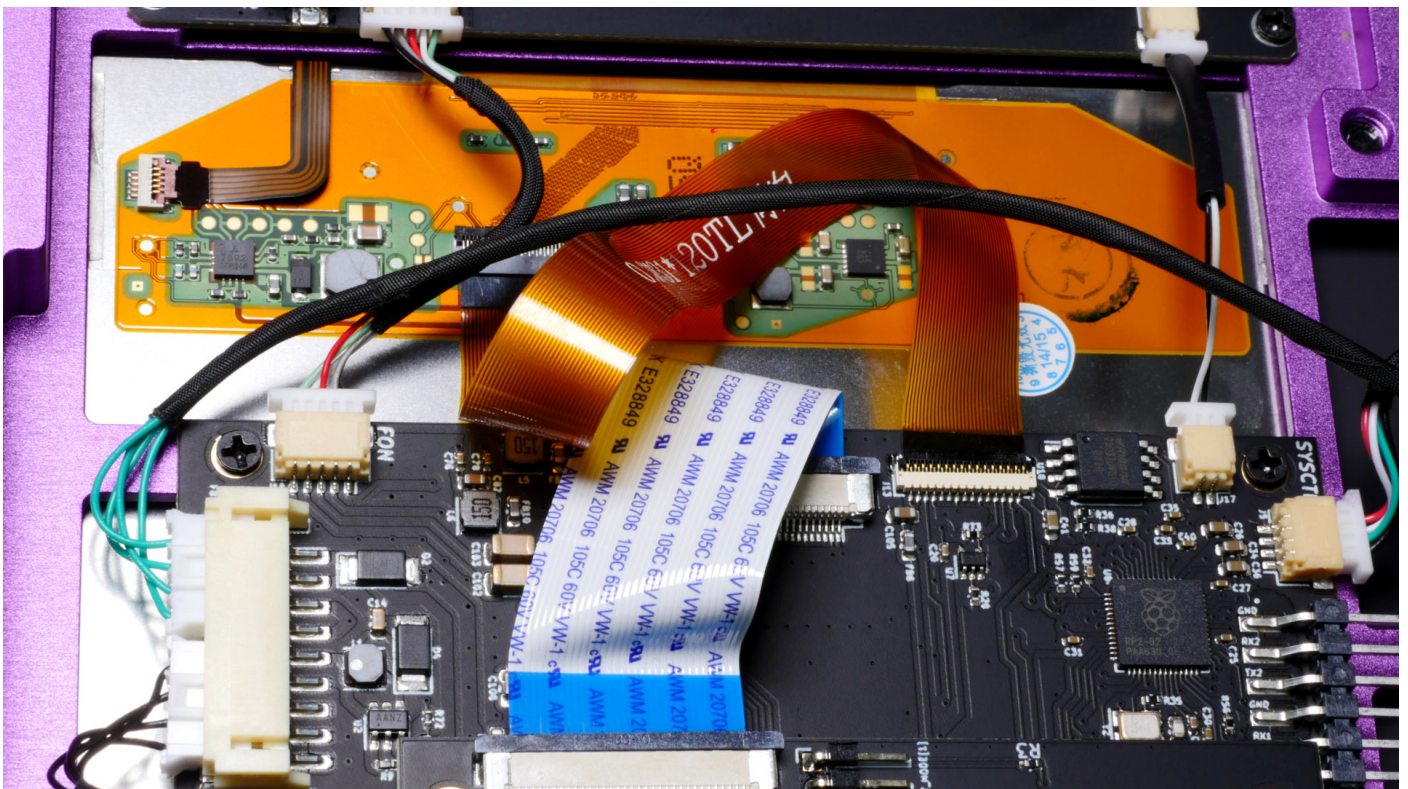
19. Insert the magnets (15) into the top half (2) and make sure they do not repel by holding them against their respective counterpart on the bottom half (1). The magnets ensure that the device closes properly after use.

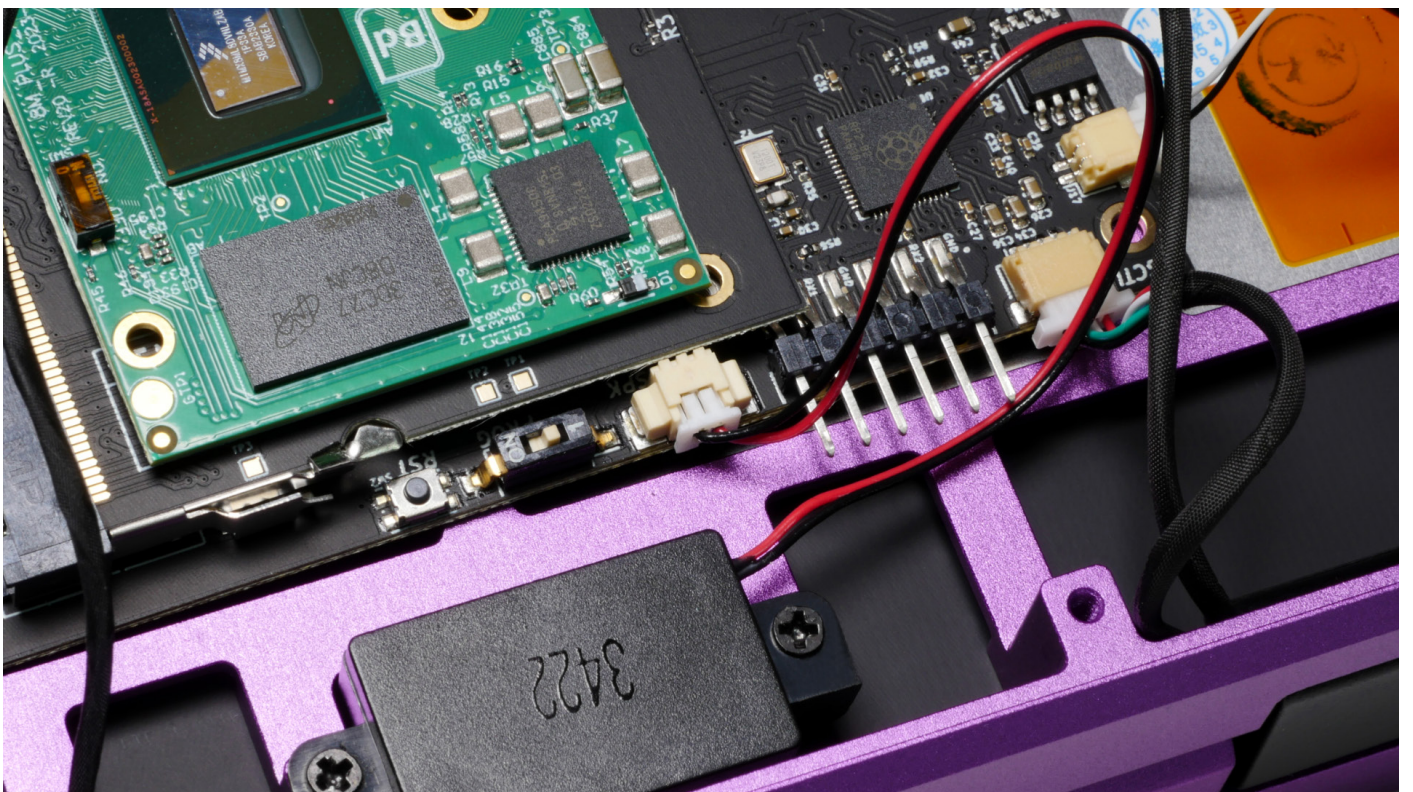
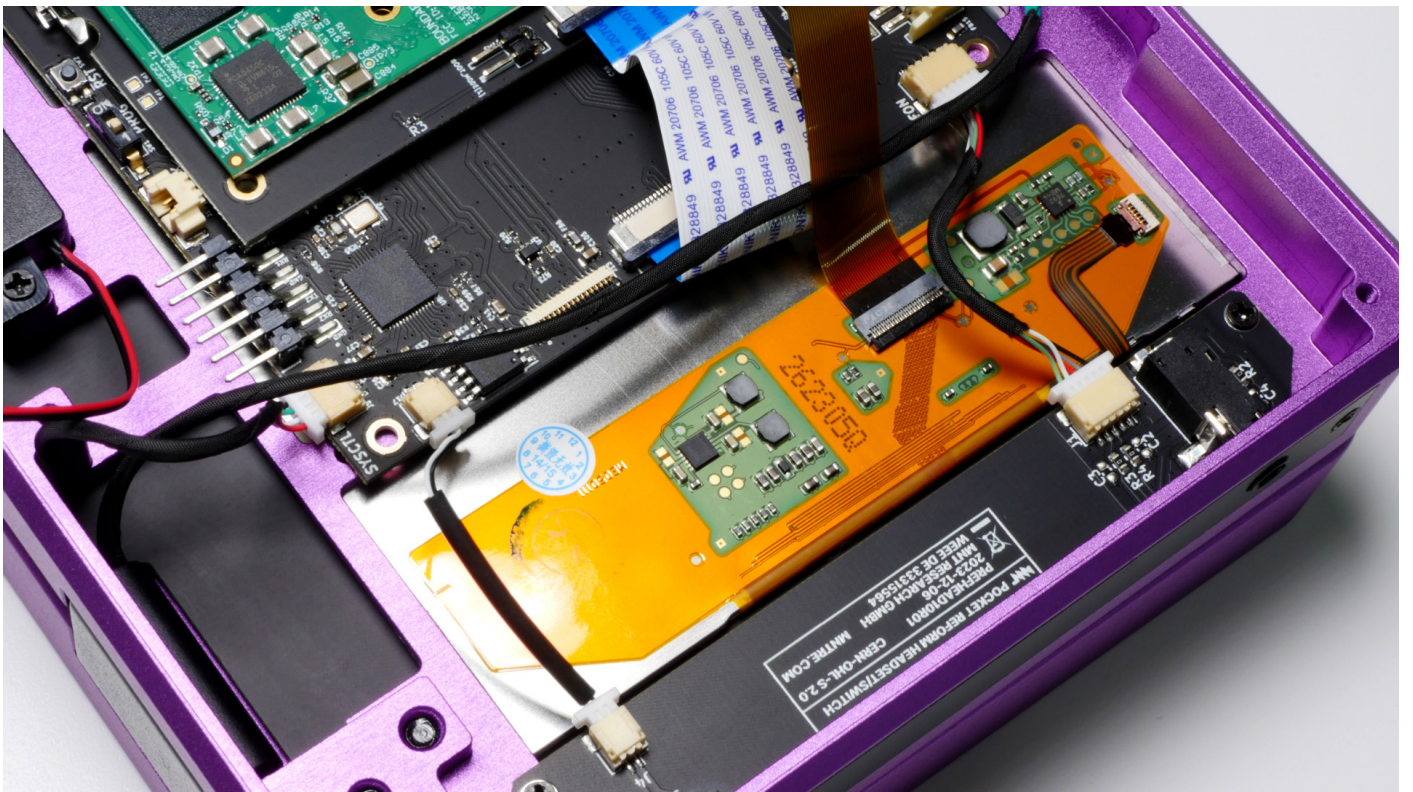


20. Remove the protective film of the display (11). Mount the display frame (6) with M2×5 mm countersunk head screws. Hold it in place and be mindful that the magnets will attract the screws and the screwdriver.



21. Take the motherboard (20) and pre-connect the charger cables (8) - don't push them in completely yet. Make sure that the black cable is on the left as pictured. While connecting the charger cables, make sure not to damage any components. Now connect all the other cables.





22. Mount the motherboard (20) starting with the port side on the right using M2×5 mm countersunk head screws. Use M2×3 mm countersunk head screws for the other side. Make sure that the cables are firmly in place.



23. Now use a small wooden or plastic tool to plug in the charger cable connectors (8). Patience is key! Wiggle them a little until they fit snugly. Make sure not to damage the cables.



24. Insert the Wi-Fi card (17) into the slot on the motherboard. Mount it using an M2×2 mm M.2 mounting screw.



25. If you have an SSD (16), insert it and use an M2×2 mm M.2 mounting screw to mount it. Make sure to not overscrew.



26. Connect the antennas (18) by pushing and wiggling them on their respective connector on the Wi-Fi card. Remove the protective film from the sticker and adhere it to the headphone board (24). Place the other one on the back of the top back cover (3).



27. Put the thermal pad (21) on the big chip of the processor module.



28. Mount the top back cover (3) to the top half (2) using M2×5 mm countersunk head screws.



29. Put foam stickers (26) on the inside of the batteries holders (9). Put two foam stickers (26) on each battery (10). Make sure that the cables on the side face each other. Plug these into the charger connectors. Then insert the batteries (10) into the battery holders (9). Make sure that the cables are not squeezed under the batteries.



30. Mount the bottom back cover (4) to the bottom half (1) using M2×5 mm countersunk head screws.



31. All done — congratulations on your MNT Pocket Reform assembly!



MNT Pocket Reform

Dear MNT Customer,

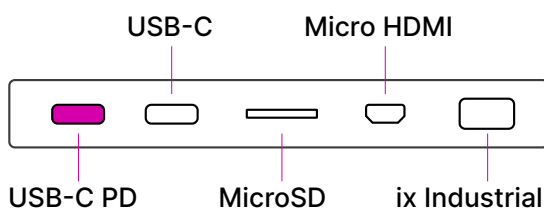
Thank you for purchasing Pocket Reform, our fully open hardware 7" mini laptop. We hope you'll enjoy your new device.

Quickstart

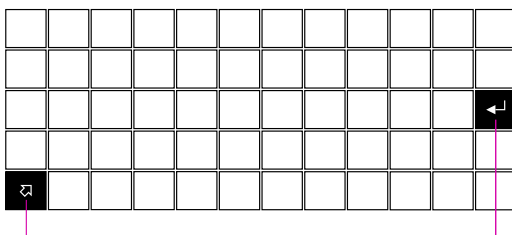
- The batteries are connected by default. There is a small Standby Power Switch located on the left hand side of the upper case part. Turn it on using a pointed object such as a SIM ejector.



- Connect Pocket Reform to a USB-C PD Power Supply.

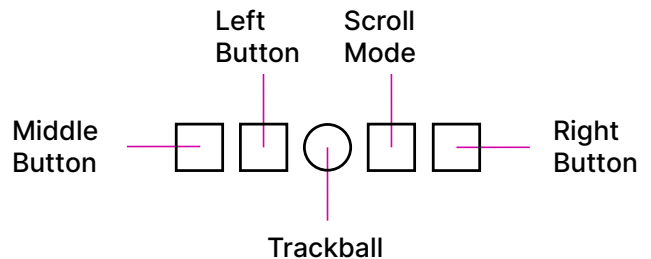


- To turn on Pocket Reform, hold *HYPHER* + *ENTER* for more than 2 seconds.














- On first boot, the Setup Wizard will walk you through the configuration process.

Trackball Buttons



Shortcuts

-   1 Decrease Screen Brightness
-   2 Increase Screen Brightness
-   Change keyboard backlight brightness (roll vertically)
-   Change keyboard backlight hue (roll horizontally)
-    Adjust keyboard backlight saturation (roll to any side)

Contents

- MNT Pocket Reform
- Quickstart and Safety Sheet
- Hyper model only:
 - Piñatex Vegan Leather Sleeve
 - Operator Handbook
 - Art Print
 - 1 TB SSD (preinstalled)
- Power supply not included

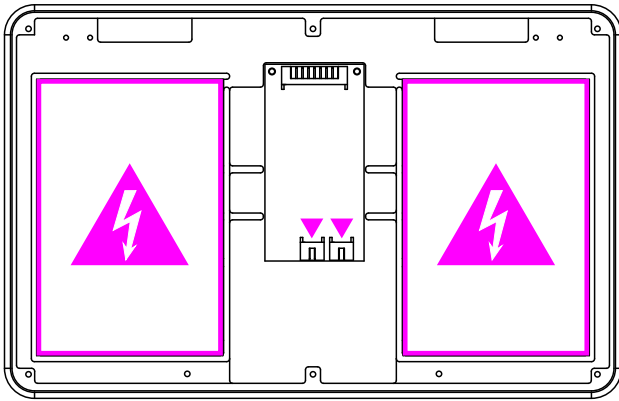
Software and Sources

Find more information on documentation on our website at <https://mntre.com/docs-pocket-reform.html>

Get updates and source code at: mntre.com

Need help? Join community.mnt.re or write to support@mntre.com

Join our IRC channel [#mnt-reform](https://irc.mnt.re)



MNT Research GmbH
Fehlerstr. 8, 12161 Berlin, Germany
HRB 136605 B
VAT ID: DE278908891
WEEE: DE 33315564
Contact: support@mntre.com

Product: MNT Pocket Reform

Important Safety Information

Caution! Fire and Explosion Hazard:

Device contains 2x Lithium-ion pouch cells in the bottom of the lower half, which are exposed when opening the bottom panel.

Unplug and remove battery cells before servicing the device. Disconnect power supply before servicing the device.

While Lithium-ion batteries are usually safe and unlikely to fail, they might cause a fire or explosion when damaged, recharged or used improperly. These hazards can occur immediately or over a period of time, from physical impact like crushing or puncturing, exposure to certain temperatures, and/or improper charging. To extinguish small battery fires use ABC dry chemical extinguishers, Class D fire extinguishers (for lithium-metal), dirt, or sand.

Opening or servicing the device is at your own risk. The manufacturer cannot be held liable for any damage, injury or death resulting from improper handling.

Long-term Storage: Remove batteries and put them in a lithium battery safety pouch. Store only in dry, cool locations with no direct sunlight.

If batteries are damaged, remove them from service, place them in fire-resistant container (e.g., metal drum) with sand or other extinguishing agent, and dispose in accordance with local, state, and federal regulations. Contact a local battery recycling center for disposal instructions.

CAUTION! Injury Hazard: Device contains strong neodymium magnets that hold together the two halves when closing. Risk of injury if body parts are caught between the halves of the device.

Warranty

MNT Research covers the warranty to the extent required by law for the unmodified product and following the safety instructions. Warranty does not cover any modifications made to the product.

The product complies with the requirements of the European Directives and DIN standards:



IEC/EN 62368-1:2020
IEC/EN 63000:2018
ETSI EN 300 328 V2.2.2
ETSI EN 301 893 V2.1.1
ETSI EN 300 440 V2.2.1